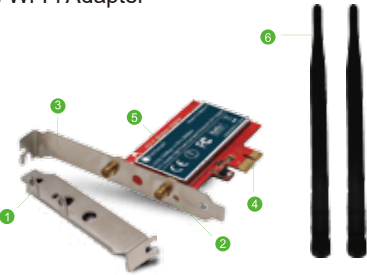


PCI Express Wireless N Dual Band Wi-Fi Adapter

Model : •FS-N600HP •FS-N900HP

Official Site:www.febsmart.com Tech-support:support@febsmart.com

FS-N600HP High Power Dual Band Wireless N600 (2.4GHz 300Mbps or 5GHz 300Mbps) PCI Express (PCIE) Wi-Fi Adapter



FS-N900HP High Power Dual Band Wireless N900 (2.4GHz 450Mbps or 5GHz 450Mbps) PCI Express (PCIE) Wi-Fi Adapter



- 1 Low profile bracket
- 2 Activity Indicator
- 3 Standard profile bracket
- 4 PCI express interface
- 5 Heat sink
- 6 2(3)X5dBi antenna

1

FS-N600HP Product Description:

FS-N600HP is a high power PCI Express Wireless Adapter; Select by Qualcomm Atheros Network Solution; Offers super speed and stable wireless connection on PCs, Working stations by on board PCI Express Slot. Allow connected device get a max 300Mbps throughput data speed on 2.4GHz or 5GHz. It's a easy and low cost way to add desktop PCs or Working Stations on Wireless for internet surfing, file downloading, online gaming and HD video streaming.

FS-N600HP Product Value:

Power consumption: 2.85Watts
 Wireless Signal: 2x2 802.11n 2-Stream MIMO
 Compatible PCs: Standard PC and Mini Size PCs
 Max Wi-Fi Speed: 2.4GHz 300Mbps or 5GHz 300Mbps
 Antennas: 2X5dBi external detachable dual band antenna
 Working Mode: Wi-Fi Adapter (Receiver) and Wireless AP
 Wireless Standard: IEEE802.11n, backward compatible IEEE 802.11 a/b/g/ ac
 Hardware Interface: PCI-E 2.0 X1, Works on PCIE X1, X4, X8, X16 slot

FS-N900HP Product Description:

FS-N900HP is a high power PCI Express Wireless Adapter; Select by Qualcomm Atheros Network Solution ; Offers super speed and stable wireless connection on PCs, Working stations by on board PCI Express Slot. Allow connected device get a max 450Mbps throughput data speedon 2.4GHz or 5GHz. It's a easy and low cost way to add PCs or

2

Working Stations on Wireless for internet surfing, file downloading,online gaming and HD video streaming.

FS-N900HP Product Value:

Wireless Signal: 3x3 802.11n 3-Stream MIMO
 Compatible PCs: Standard PC and Mini Size PCs
 Max Wi-Fi Speed: 2.4GHz 450Mbps or 5GHz 450Mbps
 Antennas: 2X5dBi external detachable dual band antenna
 Working Mode: Wi-Fi Adapter (Receiver) and Wireless AP
 Wireless Standard: IEEE802.11n, backward compatible IEEE 802.11 a/b/g/ ac
 Hardware Interface: PCI-E 2.0 X1, Works on PCIE X1, X4, X8, X16 slot

FS-N600HP& FS-N900HP System Requirements:

Linux Driver: ATH9K (Provide driver link only)
 Driver Free on Windows 8, Windows 8.1, Windows 10 (32/64bit)
 Need driver on Windows Server, Windows XP, Windows 7(32/64bit)

NOTE: FS-N600HP and FS-N900HP Qualcomm Atheros inside PCIE Wireless N Network Cards works on Windows Server, Windows XP, Windows Vista, Windows 8, Windows 8.1, Windows 10 32& 64 bit systems. Linux users please open file name Linux Driver link get ATH9K source code online.

FS-N600HP&FS-N900HP Package List:

1X PCIE Wi-Fi Adapter; 1X Mini CD
 1X User Manual; 2X 5dBi Antennas
 1XMounting Screw; 1X Lower Profile Bracket

3

Analytical Note :

1. Can find"Qualcomm Atheros ARXXXXXX Wireless Network Adapter"means Works Correctly no need to nstall driver anymore. Can connect to internet directly as you wish. (Windows 10,Windows8.1,Windows8(32/64bit)
- 2.Can't find "Qualcomm Atheros ARXXXXXX Wireless Network Adapter" or PC can find it in a yellow triangle. Or PC can find a "Ethernet Controller"(Unknown Device) under Other Device in Device Manager. Means users have assembled this card on PCs correctly.And PC have found it,but lack driver on users PCs. Please install drivers in Mini CD. (Windows 7,Server,XP)
3. Can't find"Qualcomm Atheros ARXXXXXX Wireless Network Adapter", can't find" Ethernet Controller (unknown device)"under Other Device in Device Manager. Means you were not put the Wi-Fi card to PCI Express Slot correctly. Need to re-plug Wi-Fi adapter or change it to another PCI Express slot and check again.

Software Installation

Note : Most of Windows 10, 8.1,8 systems do not need any driver if equipped with Windows original system. If system is unable to read Wi-Fi adapter, please refer to the driver installation steps as below.

8

The software for each system are using same operating panel, but build in different driver files.

Preparation :

1. If computer have CD RAM,please go to open the Atheros file folder directly.
2. If computers can not read CD please try to download correct driver from our site www.febsmart.com or contact us at support@febsmart.com
- 3.FS-N600HP&FS-N900HP are Qualcomm Atheros Inside Wi-Fi adapters they sharing same drivers and install steps as below.

Install Driver Software on Windows 10,8.1,8,7,Windows Server and XP (32/64bit) System:

Note : This driver installation steps works for Windows10, 8.1, 8, 7 ,Windows Server and XP (32/64bit)

Step 1.Follow steps and find correct software version on mini CD or Downloaded software pack:



9

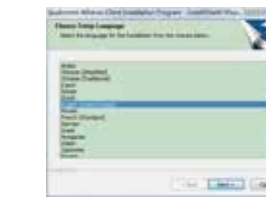
Step 2. Double right-click the software and running the software.

1. Double right-click

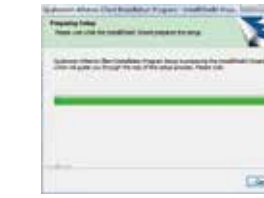


10

2. Select language



3. Waiting for preparation files ready.



- 4.Click "Next"



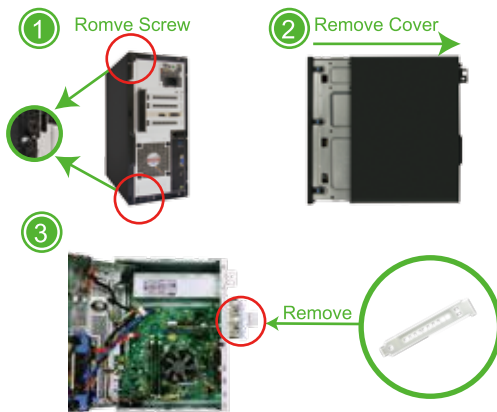
- 5.Accept the license.



11

Assemble Wi-Fi Adapter to Desktop Computers :

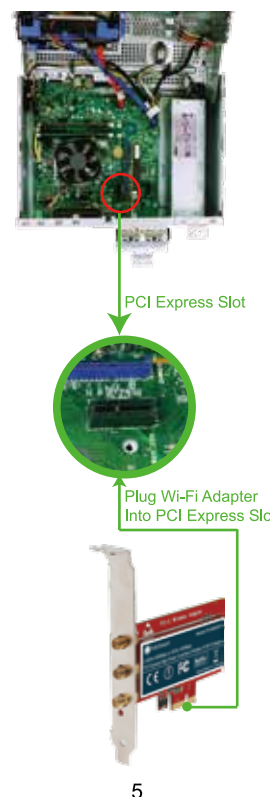
Step1. Switch OFF, unplug your computer from the main socket, unplug the power cord and other connected peripheral devices. Remove the cover from computer's case.



Step2. Find the correct PCI Express Slot ,Insert the wireless network card into an empty PCI-E slot of the motherboard.

4

4



5

Step3.Screw in the antennas included directly to wireless network card. Note: If needed Position of the antennas can be adjusted to improve wireless reception. Reattach the cover of computer case, turn on computer.

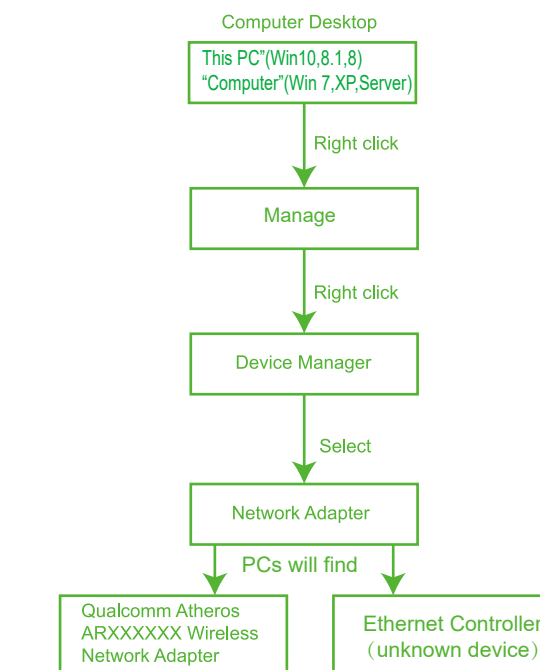
5



Screw Antenna

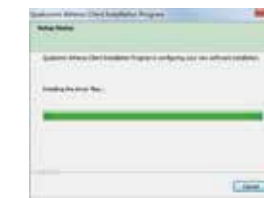
6

Find the Wi-Fi adapter on computers, check if the Wi-Fi adapter assembled properly :



7

- 6.Waiting for program installation



- 7.Click "Finish", and using the new wireless network card.



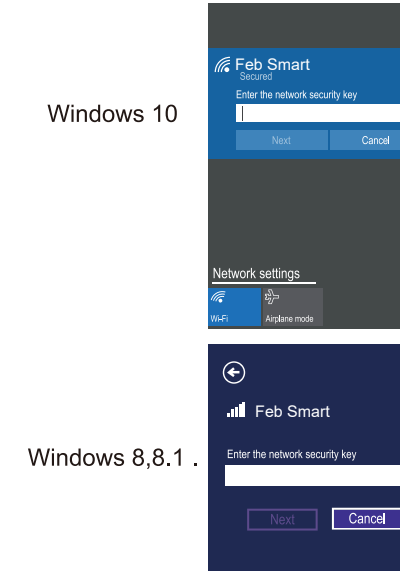
Step3. Connect to internet:

- 1.Locate the task bar in the bottom right corner of your desktop.
- 2.Select the Wireless icon as below on each system.

12



3. Select the Wi-Fi signal, fill correct password and connect to it. Afterwards enjoy fast internet.



13

Windows 7



Trouble Shooting Analyze :

1. Why this card can't connect to 5G or PCs can't find 5G signal on my PC?
 PCs find 5GHz signal but can't connect: 1.Connect to 2.4G first, make sure it is connected .2. Find your 5G signal and connect, most of them will work. PCs cannot find my 5G signal but 2.4G works: 1.Connect 2.4G signal first. 2. Restart PC or re-plug this Wireless card. Or in Device Manager-Remove this card and install driver again for it. Then PCs will find 5GHz and will allow PCs connect.
2. Why my PCs always get poor signal or drops sometimes?
 A. Test Wi-Fi signal in PC area(same spot, same height) by cell phone check if PC was placed in a Wi-Fi dead zone if yes, please change location for PCs.
 B. If the distance little long PCs will get poor signal or only 2.4G signal. To improve this please considers change the PCs or Wireless AP's location. Or you can buy a more power Wi-Fi Antenna for it.

14

3. Why my PC find 2.4G signal only?
 PCs was placed too far away from Router.5GH band will support more data speed by covers a small area. Wireless AP or Router's signal may cannot reach PCs location. Considers decrease the distance between Router and PC.
4. I am a Linux user how can I get source code to compile my PC?
 Go to open the mini CD in the package find ATH9K links get source code online. Or go to our site download ATH9K driver.
5. Windows10,8.1,8 system cannot load this card automatically how to fix this ?
 Just need to install the drivers in mini CD, device will works properly. If do not have CD ROM, please go to our site download drivers for the models in your hand.
6. My PCs find few signals only, not as expected performance, how to fix this?
 Please remove Wi-Fi card from PCs and install it again. At the same time please screw Wi-Fi antenna and make sure it is screwed correctly. Most of time it is Wi-Fi antenna wasn't screwed properly.
7. There a PCIE X16 port only,is it working on this ?
 Absolutely YES,Works on PCIE X1, X4, X8, X16 slot
8. Where I can find support from Feb Smart ?
 Get prompt tech-support:www.febsmart.com or support@febsmart.com

15