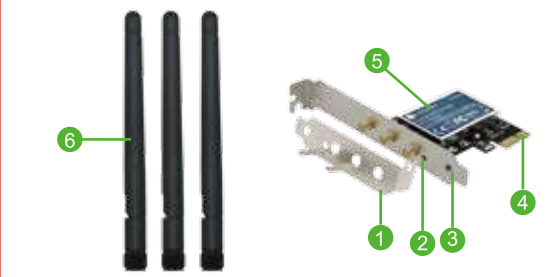




# Wireless N 900Mbps Dual Band PCI Express Wi-Fi Adapter

Model : FS-N900

**Basic Edition:** FS-N900 Wireless N 900Mbps Dual Band Wi-Fi Adapter with Antenna



**Pro Edition:** FS-N900 Wireless N 900Mbps Dual Band Wi-Fi Adapter with High Power Antenna



- 1 Low profile bracket
- 2 Activity Indicator
- 3 Standard profile bracket
- 4 PCI express interface
- 5 Heat sink
- 6 3X3 dBi Wi-Fi Antenna
- 7 Extension cable(2meters)
- 8 Magnetic mounting base
- 9 3X6dBi high gain antenna

### Product Description :

Feb Smart Wireless Dual Band N900(2.4GHz 450Mbps or 5GHz 450Mbps)PCI Express (PCIe 1X) Wi-Fi Adapter Network Card Special Designed for Online Gaming and HD Video Streaming.

### Product Features :

1. Intel® Centrino® Ultimate-N 6300 Chipset inside for stable Wi-Fi connection.
2. Super fast wireless N network at 5G 450 Mbps or 2.4G 450 Mbps.
3. Seamlessly compatible with 802.11a/b/g/n products
4. Supports 64/128 WEP, WPA/WPA2, WPA-PSK/ WPA2-PSK(TKIP/AES)
5. Upgrades a standard or low profile bracket for all desktop PC.

6. External Wi-Fi antenna for better wireless connection and coverage.
7. Detachable antenna design for more powerful antenna replacement
8. Compatible with IEEE 802.1X, 4X, 8X, 16X PCI express slot.

### Basic Edition Package :

- 1X FS-N900
- 3X Wi-Fi Antenna
- 1XUser Manual
- 1xMini CD
- 1XLow Profile Bracket

### Pro Edition Package :

- 1X FS-N900
- 1X High Power Antenna Kit
- 1XUser Manual
- 1xMini CD
- 1XLow Profile Bracket

**Warning:FS-N900 INCOMPATIBLE WITH AMD CPU PC. ONLY FOR INTEL CPU PC.**

### System & Hardware Requirements:

Windows 10(32/64bits), Windows 8.1(32/64bits), Windows8 (32/64bits), No need driver.

Windows7 (32/64bits), Windows XP (32/64bits), Need to install the driver by the mini CD in the package. Get the newest driver please visit <https://downloadcenter.intel.com> and search" Intel® Centrino® Ultimate-N 6300, Dual Band" Or send email to us at [support@febsmart.com](mailto:support@febsmart.com).

### Analytical Note :

1. Can find " Intel® Centrino® Ultimate-N 6300 A G N" means Works Correctly no need to install driver anymore. Can connect to internet directly as you wish.
2. Can't find " Intel® Centrino® Ultimate-N 6300 A G N", but can find " Intel® Centrino® Ultimate-N 6300 A G N" under "Other Device" in "Device Manager." Means your system maybe have been deleted few file from Windows original system .But Wi-Fi Adapter was placed correctly .Do not worry follow steps install the software. Device will work.( Most Windows 7,XP like this)
3. Can't find " Intel® Centrino® Ultimate-N 6300 A G N", can't find" Inte® Centrino® Ultimate-N 6300 A G N" under "Other Device" in "Device Manager." Means you were not put the Wi-Fi card to PCI Express Slot correctly. Need to re-plug Wi-Fi adapter or change it to another PCI Express slot and check again.

### FS-N900 Software Installation :

Note: FS-N900 compatible with Windows10, 8.1,8,7, XP (32/64bit) Intel CPU computer. Most of Windows 10, 8.1,8 systems do not need any driver if equipped with

Windows original system. If system unable to read Wi-Fi adapter, please refer to the software installation steps as below. Windows 7, XP (32/64bit) need to install driver.The software for each system are using same operating panel, but build in different driver files.

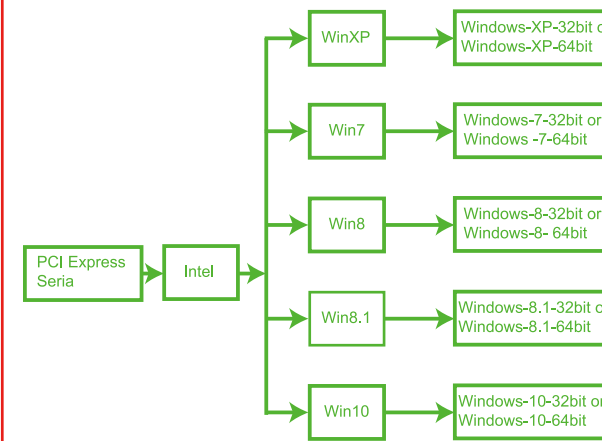
### Preparation :

1. If computer have CD RAM, please check computer system version. For example, Windows 7 32 or 64 bit.
2. If computer can't read CD please visit [www.febsmart.com](http://www.febsmart.com) and download software pack. Or go to [downloadcenter.intel.com](http://downloadcenter.intel.com) search Intel® Centrino® Ultimate-N 6300 A G N make sure the corrected software is selected. Afterwards, check the system version such as Windows 7 64 bit.

### Install the Software on Windows10, 8.1, 8, 7, XP (32/64bit):

Note: This driver installation steps works for Windows10, 8.1, 8, 7,XP (32/64bit) systems.

Step1, Follow steps and find correct software version on mini CD or Downloaded software



Steps2. Double right-click the software and running the software.

1. Double right-click



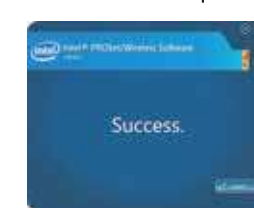
2. Accept license , Click Install.



3. Waiting the installation.

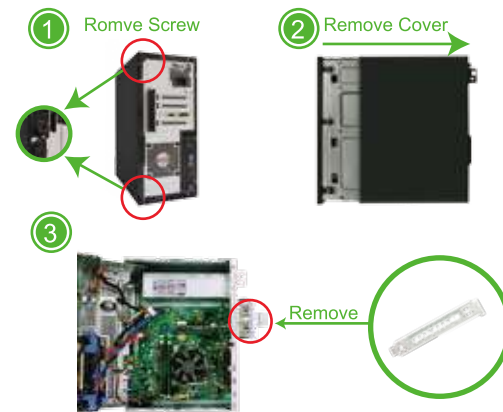


4. Installation done. Restart computer please.

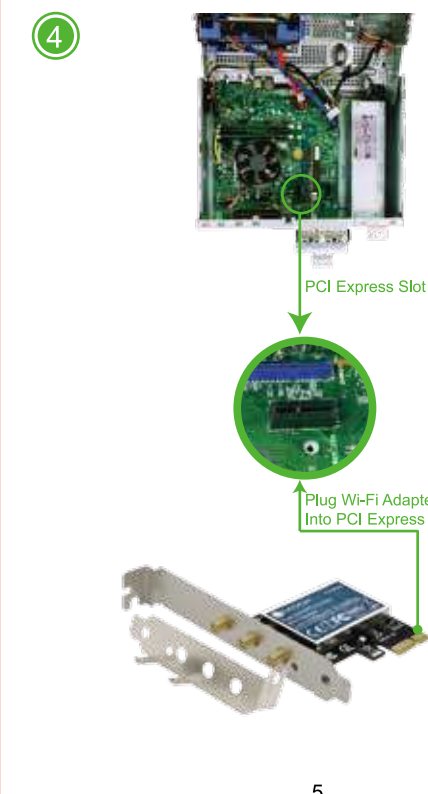


### Assemble Wi-Fi Adapter to Desktop Computers :

Step1. Switch OFF, unplug your computer from the main socket, unplug the power cord and other connected peripheral devices. Remove the cover from computer's case.



Step2. Find the correct PCI Express Slot ,Insert the wireless network card into an empty PCI-E slot of the motherboard.



Step3. Screw in the antennas included directly to wireless network card. Note: If needed Position of the antennas can be adjusted to improve wireless reception. Reattach the cover of computer case, turn on computer.

Basic Edition :

Pro Edition :

5

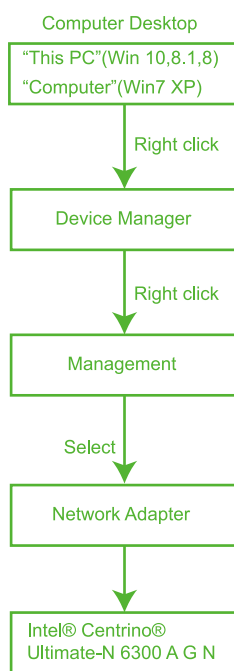


Screw Antenna



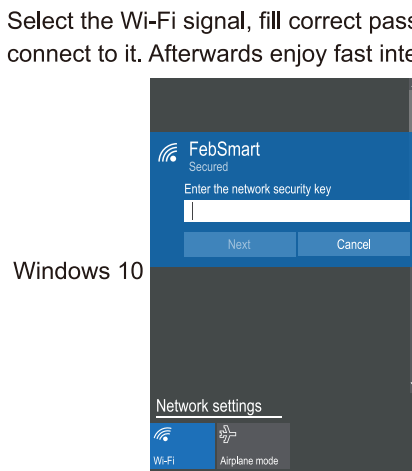
Screw Antenna

Find the Wi-Fi adapter on computers, check if the Wi-Fi adapter assembled properly :

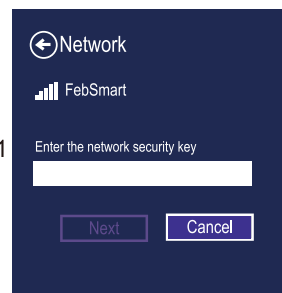


Step3. Connect to internet :

- 1.Locate the task bar in the bottom right corner of your desktop.
- 2.Select the Wireless icon as below on each system.
3. Select the Wi-Fi signal, fill correct password and connect to it. Afterwards enjoy fast internet.



Windows 8,8.1



Windows 7



### Trouble Shooting Analyze:

1. Assembled the adapter and completed software installation my computer can't find the any Wi-Fi signal, how can I fix it?

Step1. FS-N900 compatible with Windows10,8.1,8,7,XP

system, check if your system on the list.

Step2.System on the list, but computer can't read any signal, please close the computer open the cover change the PCI Express slot to another or re-plug it .Ensure it is plugged correctly. Computer will find it soon.

2. Where I can get the latest software for my computer?

FS-N900 designed by Intel chipset so it means you can download the latest software on Intel's site. Get the newest software please visit <https://downloadcenter.intel.com> and search" Intel® Centrino® Ultimate-N 6300, Dual Band" Or send email to us at [support@febsmart.com](mailto:support@febsmart.com).

3. Why my computer can find poorly signal only? How get better signal ?

FS-N900 Basic Edition packed with normal antenna it can receive signal around 10~20meters in house, the signal strength depends on your router. At the same time you can change the direction of the antenna to get more better signal. Or you can purchase Feb Smart FS-A3 change a high power antenna.

The other possibility is the antenna was not correctly put on the interface.

4. Where can I get tech-support?

Any question about Feb Smart's product please contact us at [support@febsmart.com](mailto:support@febsmart.com) or visit [www.febsmart.com](http://www.febsmart.com)

5. Why the signal always drop sometimes?

1. The signals from router, so check if router works properly first, better restart the router wait few minutes and connect it again. Sometimes router was saved to much data,need to restart and release the space.
2. Check if the antenna was put correctly.
- 3.Computer was put too far away from the router. Or signal from the router is unstable.

6. How can I trust your product in high performance?

FS-N900 was designed by Intel® Centrino® Ultimate-N 6300 network card chipset. And the soft ware comes from Intel official site . High performance chipset make sure you connectivity safe and stable. Windows certified software runs more stable than any other network card.